



A Publisher's Perspective

Dr Gemma Hemming
Journals Commissioning Lead
Emerald Publishing

11th June 2021

Aim and overview

- About Emerald Publishing
- Disaster risk journals
- Open Access
- Emerald Open Research
- Selecting the right journal
- Rankings, metrics and impact
- What makes a good article
- The publishing process and peer review
- Questions?

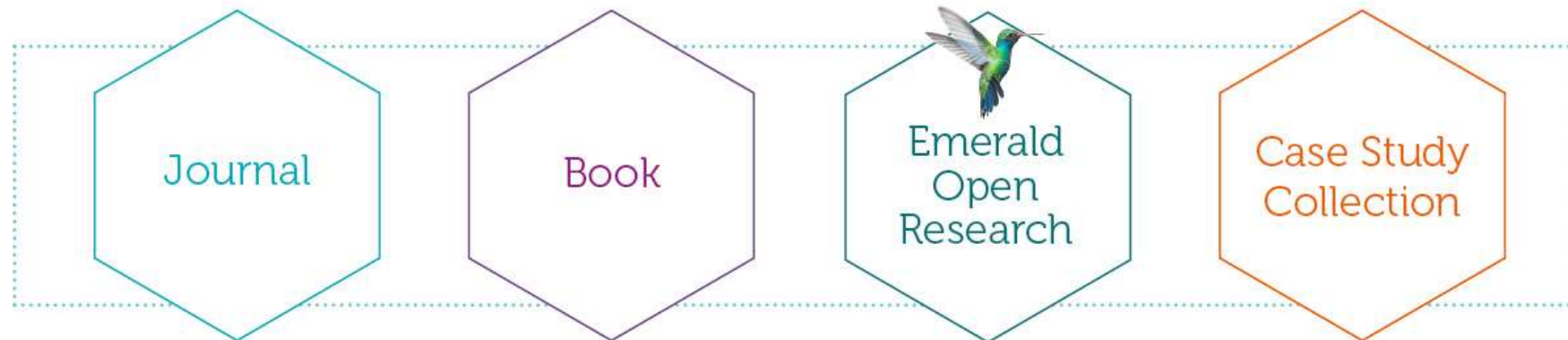
About Emerald Publishing

- Founded in 1967 in Bradford, West Yorkshire, UK.
- Independent and family-owned academic publisher.
- Strong global presence – regional hubs around the world.
- Core subjects: business, management, education, engineering, built environment:

300+ Journals

200+ Book front list

Teaching Cases



Emerald's mission and goals

Emerald supports the UN Sustainable Development Goals (SDGs), and as part of this, we publish, promote and disseminate research on four interdisciplinary goals:

- fairer society
- healthier lives
- responsible management
- quality education for all

Each of our goals relates to several corresponding SDGs.



Disaster risk journals

Flagship journals:

- *International Journal of Disaster Resilience in the Built Environment*
<https://www.emeraldgrouppublishing.com/journal/ijdrbe>
- *Disaster Prevention and Management*
<https://www.emeraldgrouppublishing.com/journal/dpm>

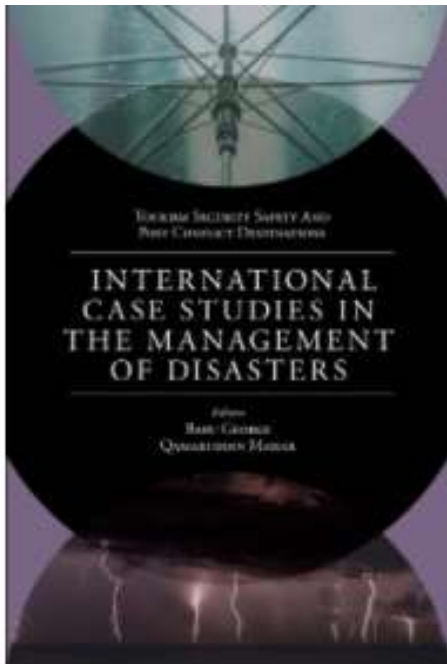
Other relevant journals:

- *International Journal of Emergency Services*
- *Built Environment Project and Asset Management*
- *International Journal of Climate Change Strategies & Management (open access)*



Books

- Flexible formats: research monographs, edited collections, short form quick-to-publish books, professional and trade oriented titles



Open Access (OA)

- We provide a broad range of open access publishing models:
 - Journals
 - Books
 - Emerald Open Research
- **Green Open Access** – all Emerald journal or book chapter authors have the option to make their research immediately and openly available on publication, free from payment.
- Authors can publish **Gold Open Access** in any Emerald journal through the hybrid option or in one of our Gold OA journals.
- Under the **Emerald Publishing Services** programme, we publish a growing number of **Platinum Open Access journals** whereby the costs of publishing an OA journal are sponsored by a third party (i.e. institution/association). All articles published in that journal are automatically published as OA, with no cost to the author.



Emerald Open Research

- **Emerald Open Research** is a new and pioneering online **open access** publishing **platform** launched in partnership with F1000 Research.
- <https://emeraldopenresearch.com/>
- It allows authors to achieve transparency through an **open peer review process** and **open data policy**.
- **Research is freely available** to reuse, repurpose, and redistribute, reaching a truly global audience.



Open Research Gateways

Emerald Open Research consists of **six online gateways** aligned to the UN Sustainable Development Goals. They're interdisciplinary in nature to help solve real-world problems.

Publishes content beyond traditional articles such as:

- **Policy briefs**
- **Opinion Articles**
- **Method Articles**
- **Study Protocols**
- **Software Tool Articles**
- **Posters and Slides**
- **Data Notes**
- **Case Studies**
- **Editorials**



Fairer Society

This gateway focuses on the creation of a just and inclusive society without any barriers to participation.



Responsible Management

This gateway aims to champion thought leadership by being both a critic and supporter of responsible management research, knowledge exchange and education.



Healthier Lives

This gateway focuses on promoting good physical and mental health, and bridging the gaps between research, policy and practice to achieve healthier lives for all.



Sustainable Cities

This gateway focuses on how we can create resilient, sustainable, healthy and inclusive cities and communities for all.



Quality Education for All

This gateway aims to address the challenges facing education and focuses on breaking down divides, so that everyone can have equal access to quality education.



Sustainable Food Systems

This gateway aims to address scientific, sociological, political and economic challenges around sustainable food systems to offer solutions for development and to drive change.

Sustainable Cities gateway

- Disaster resilience of urban areas
- Urban planning, growth and logistics
- Urban regeneration, housing and gentrification
- Conservation of urban heritage
- Environmental impact and energy efficiency
- Climate sustainability, adaptation and mitigation
- Sustainable transportation and mobility
- Smart cities
- Governance and policies of cities
- Liveability, health and the urban environment
- Economic and social effects of urban living
- Pollution and waste management
- Inclusive/equitable urban growth



Sustainable Cities

This gateway focuses on how we can create resilient, sustainable, healthy and inclusive cities and communities for all.

How to select the right journal

- Choosing a journal to publish in is an investment decision. A good choice can enhance the impact of your work and your reputation.
- Factors to consider include: relevant readership, recent articles, internationality, likelihood of acceptance, circulation, time from submission to publication.
- What type of paper are you planning to write, e.g. practice paper, research paper, case study, review, viewpoint? Check which types of paper the journal accepts before submission.
- Do you have an open access mandate? You can publish OA with any Emerald journal. The usual peer review process applies.
- Usage and peer perception – ask your colleagues for journal recommendations.
- Co-authorship is often a good opportunity for first-time authors as it can add value and weight to the paper.
- Quality – are citations and rankings important to you? Consider other metrics, e.g. real world impact.

Rankings, metrics and impact

- Scopus and Web of Science are the most well-known ranking systems but others exist.
- Citations are a good, but not complete guide to quality.
- Consider other factors such as usage, impact and reputation.
- Emerald is a signatory of DORA, the Declaration on Research Assessment.
- A key element of DORA is that journal-based metrics are often misused and ill applied in research and researcher evaluation.
- Signing DORA is a natural extension to Emerald's commitment to driving positive change, working in partnership with communities across and beyond the research ecosystem.



What makes a good paper?

- Originality – what's new about the argument or results?
- Relevance to and extension of existing knowledge.
- Research methodology – are conclusions valid and objective?
- Clarity, structure and quality of writing – is it well written?
- Sound, logical progression of argument.
- Theoretical and practical implications (the 'so what?' factors)
- Recent and relevant references.
- Internationality/global focus.
- Adherence to the editorial scope and objectives of the journal.
- A good title, keywords and a well written abstract – help discoverability.
- Follows referencing and house style of journal and adheres to word length.

Polishing your work

When proofreading, look for:

- Incorrect grammar, spelling and punctuation
- Flow, transition or sense problems
- Unintended typographical errors
- Accuracy of any mathematical or statistical content
- Incomplete or inaccurate references
- Ensure consistency throughout your manuscript
- Use, but don't rely on, the spell checker
- Show the draft to someone else – have a fresh pair of eyes look at it
- Consider using language editing services such as Editage:
<https://authorservices.emeraldpublishing.com/>

Peer review process

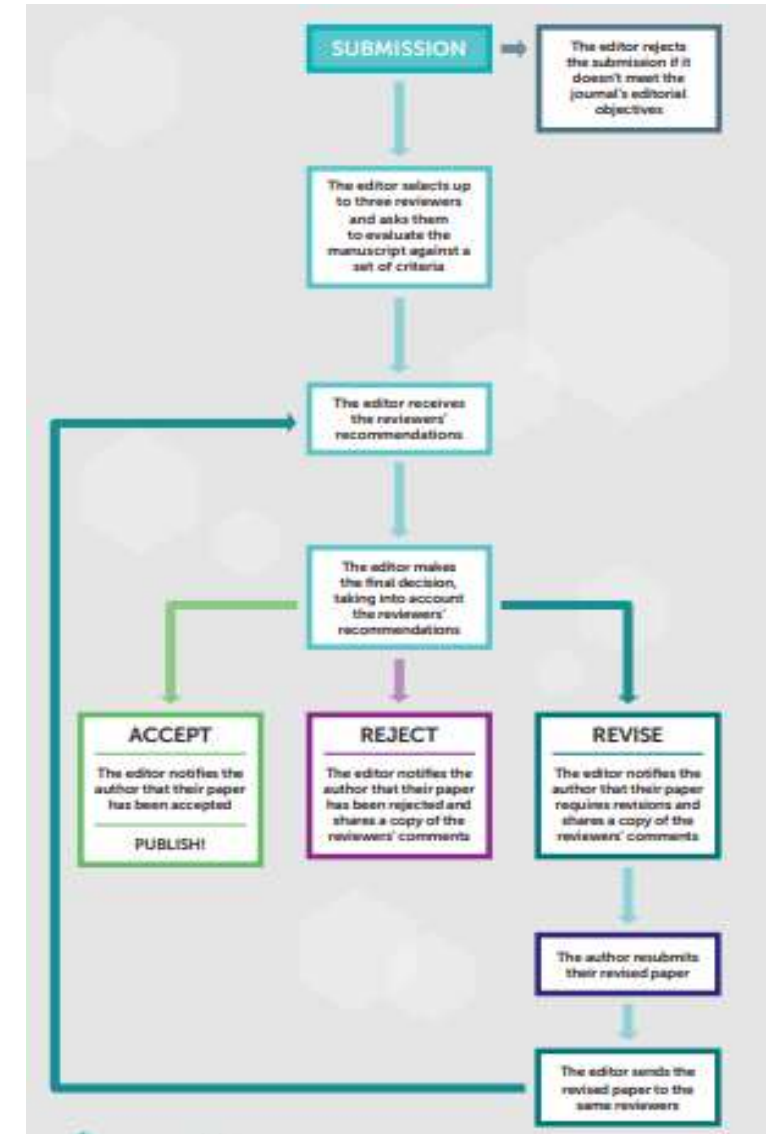
How long does this take?

- Submit via ScholarOne Manuscripts site
- Desk Review (2 weeks)
- Inviting Reviewers (another week or two)
- Under Review (6-8 weeks)
- Editor Assessment (2 weeks)

'Ideal' time from submission to review feedback: 3 to 4 months but it may be longer!

This time is dependent on a number of factors, including:

- Volume of papers in queue for initial assessment
- Availability of reviewers
- Reviewer response time



Revision request

A request for revision is good news – you are now in the publishing cycle. Nearly every published paper is revised at least once and, even if the comments are ‘sharp’ or discouraging, they aren’t personal.

- Acknowledge and thank the editor
- If you disagree with the comments, explain why to the editor
- Clarify understanding if in doubt
- Consult with colleagues or co-authors
- Meet the revision deadline or ask for an extension if you’re unable to make the deadline
- Attach a covering letter which identifies, point by point, how revision requests have been met (or if not, why not)

If your paper is rejected...

Possible reasons for rejection can include:

- Not following instructions – author guidelines
- Inappropriate to the journal scope
- Problem with quality (inappropriate methodology, not reasonably rigorous)
- ‘Paper motivation is weak’
- Insufficient contribution to the field

Remember – don’t give up. Ask and listen, try to improve and then resubmit when you’re ready.

When accepted, it's over to us!

What do publishers do?

- ✓ Editorial, rights and permission checks
- ✓ Check copyright form is signed
- ✓ Typeset and produce author proofs
- ✓ Tag your work to ensure it is searchable and discoverable
- ✓ Online early version is published ahead of official publication on EarlyCite
- ✓ Aggregation, abstracting and indexing of your work with providers such as Web of Science, Scopus, ProQuest, EBSCO and more.
- ✓ The dissemination and promotion of work through marketing campaigns
- ✓ Invest in technology that makes your research easy to find and read

A street scene with a 'Come in' sign and a teal hexagonal overlay. The sign is white with a black border and the words 'Come in' in a black cursive font. Below it is a black sign with 'we are' in a small white font and 'Open' in a large white cursive font. A teal hexagonal overlay is on the right side of the image, containing white text. The background shows a city street with buildings and cars.

Come in

we are
Open



emerald
PUBLISHING

Thank you!
Any questions?
gghemming@emerald.com